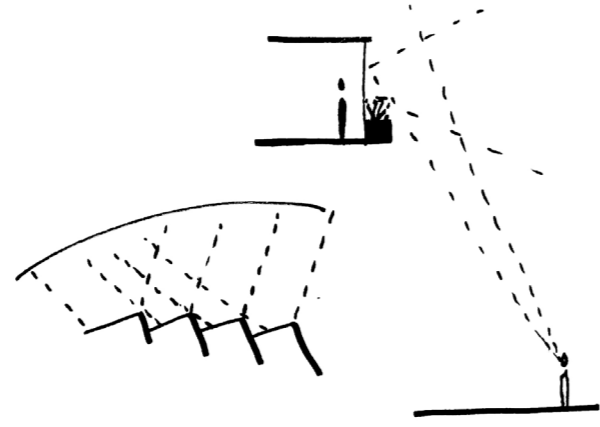
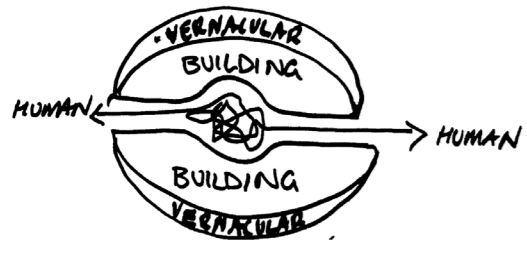


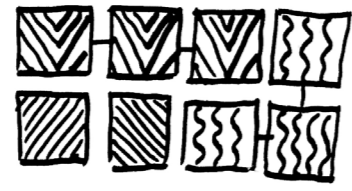
VERSITILE IMPLIED SPACE



SENSE OF PRIVACY



COMFORTABLE PRESENCE IN HUMAN ENVIRONMENT



MODULE LOGIC



PERMEABILITY

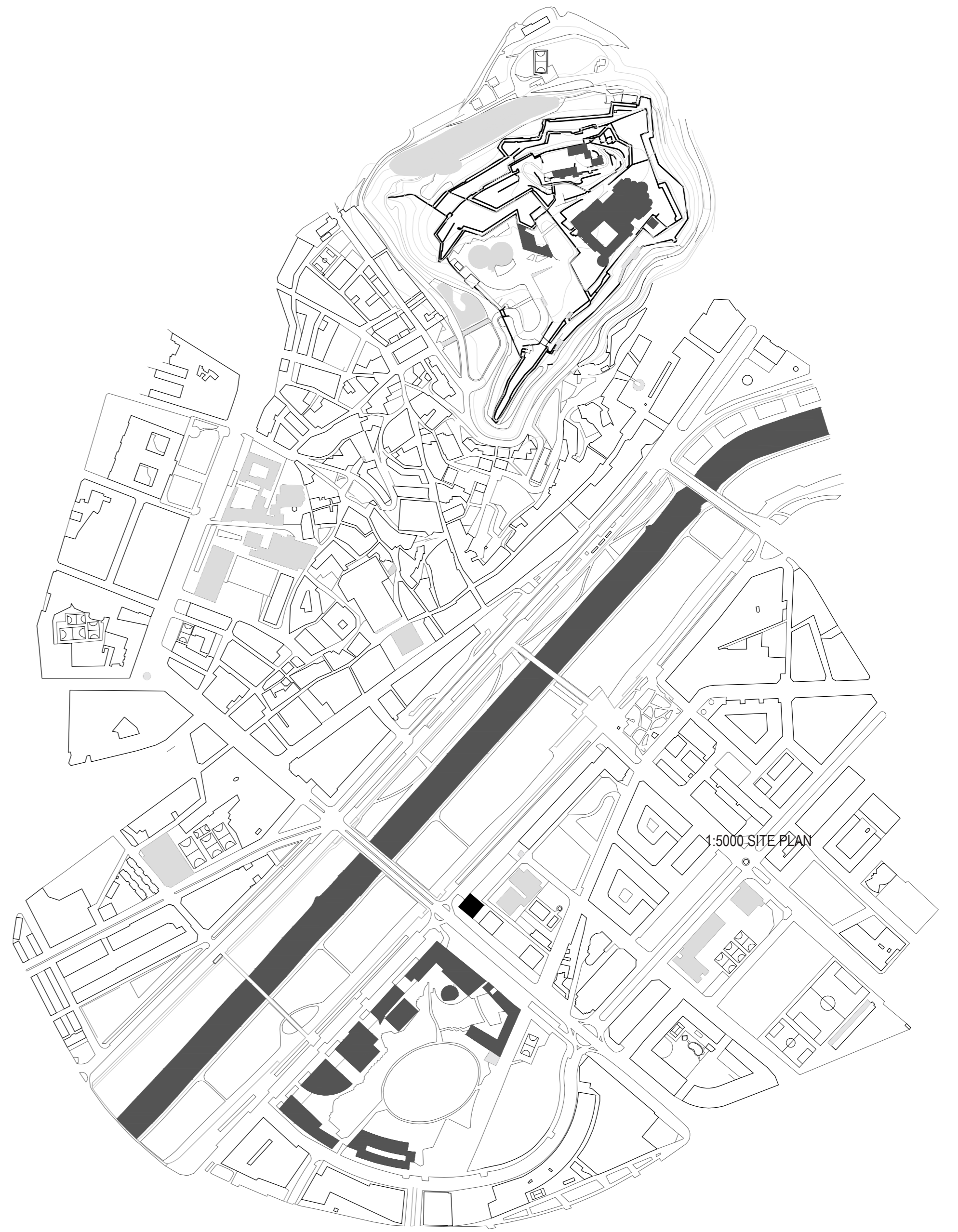
The overall intent of our project is to understand the beyond it's extruded mass as it is situated prominently in the riverfront of Lleida.

The primary response when composing the mass was in response to it's context and we began experimenting with a series of voids derived by important cites of the city and site parameters. The chosen voids were amplified by increasing their height which improved their presence in the facade and creating versatile common areas for residents. These spaces include a gymnasium, outdoor games area and private dining facilities double height space, which keeps the building line of the neighbors, enjoys a good solar orientation to the south and impressive view to the Seu in the other. On the top level there are two common space rooftops with the solarium and viewing deck; these complete the silhouette of the tower.

Being on a corner site we removed mass from the North-West corner on the ground floor to provide more considerate urban fit acknowledging the urban condition of the East neighbour and observing the problems with the surrounding buildings as they offered nothing of it's kind. Similarly to the voids this space creates atmosphere at the entrance for residents and a proud street front for the commercial tenancies.

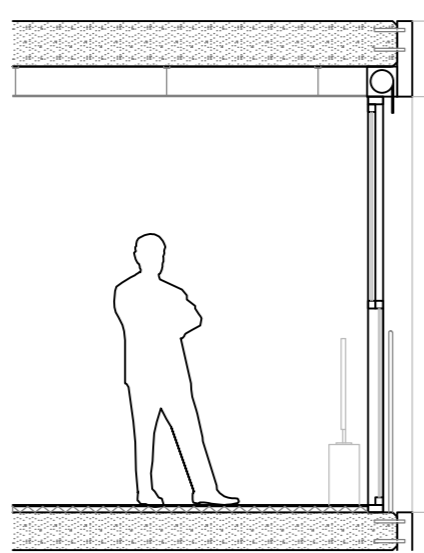
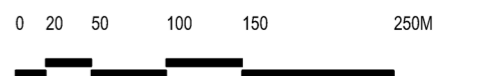
The fire protected core uses a space-efficient wrapping staircase that removing the need for external stairs and reduces the internal floor area required. The core forms the primary structure which then spans to the facade. The ring corridor allows us to distribute the dwellings as required unimpeded by structural constraints.

In the units we keep the philosophy of the ring to have all the wet areas in the interior allowing us to optimise the living plan accordingly and give natural light to all bedrooms and living areas on the facade with a full ceiling height. We propose 6 units per typical plant with 3x one bedroom units, 2x two bedroom units and 1x three bedroom unit; 64 units in total.



SITE PLAN

1:5000

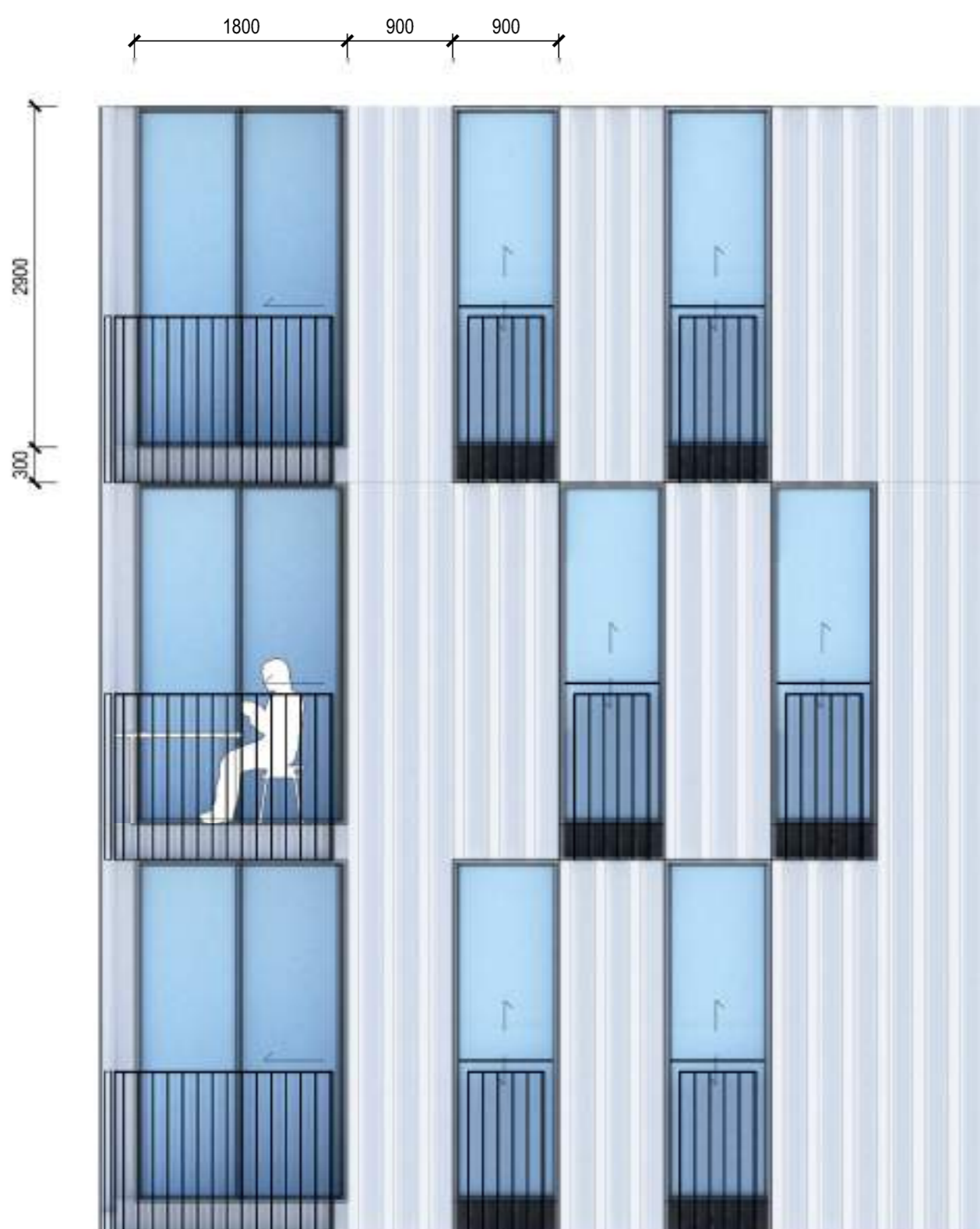


SECTION DETAIL

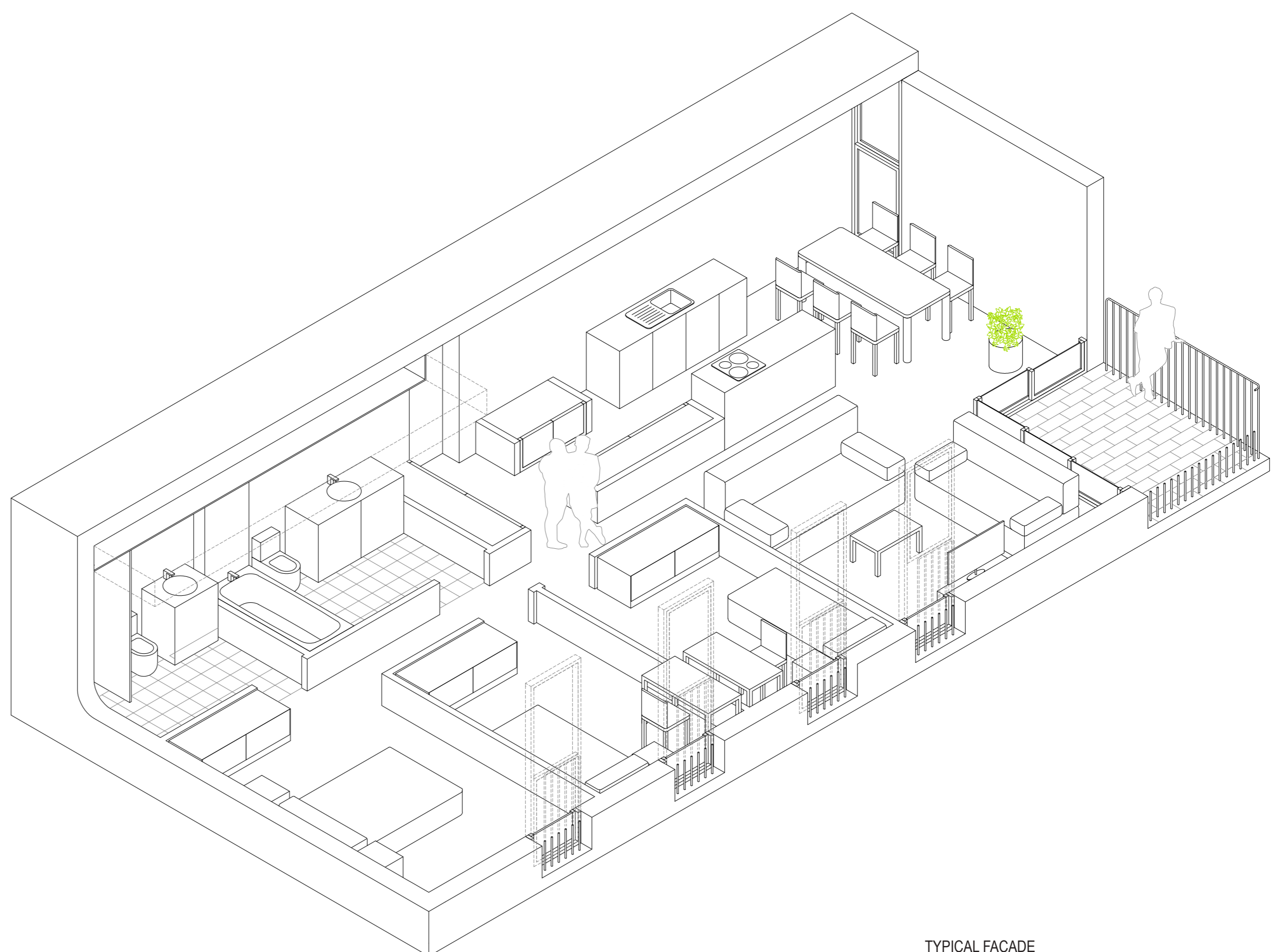


SECTION AA

1:1000

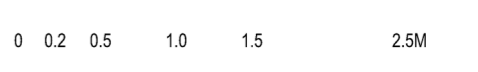


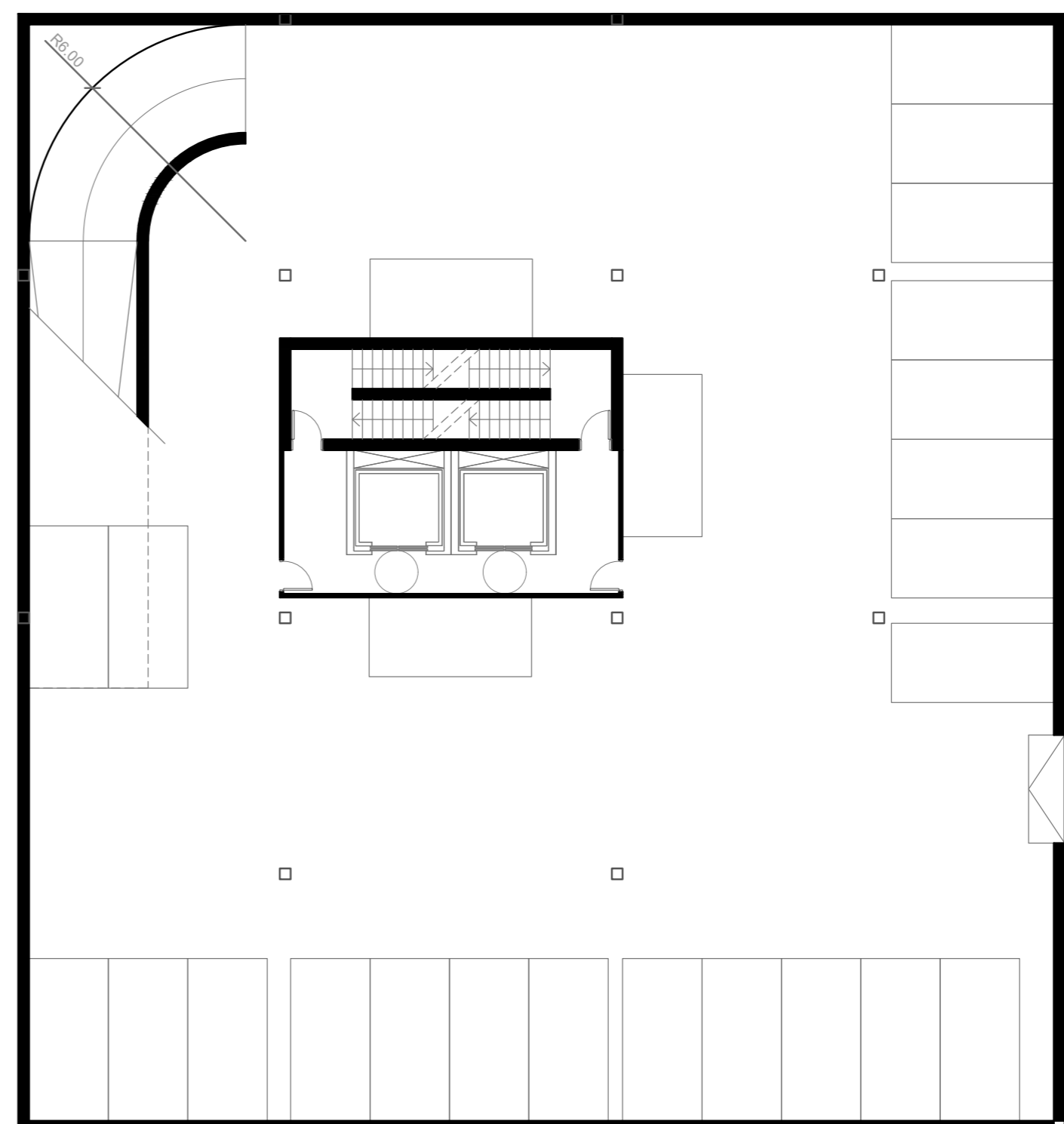
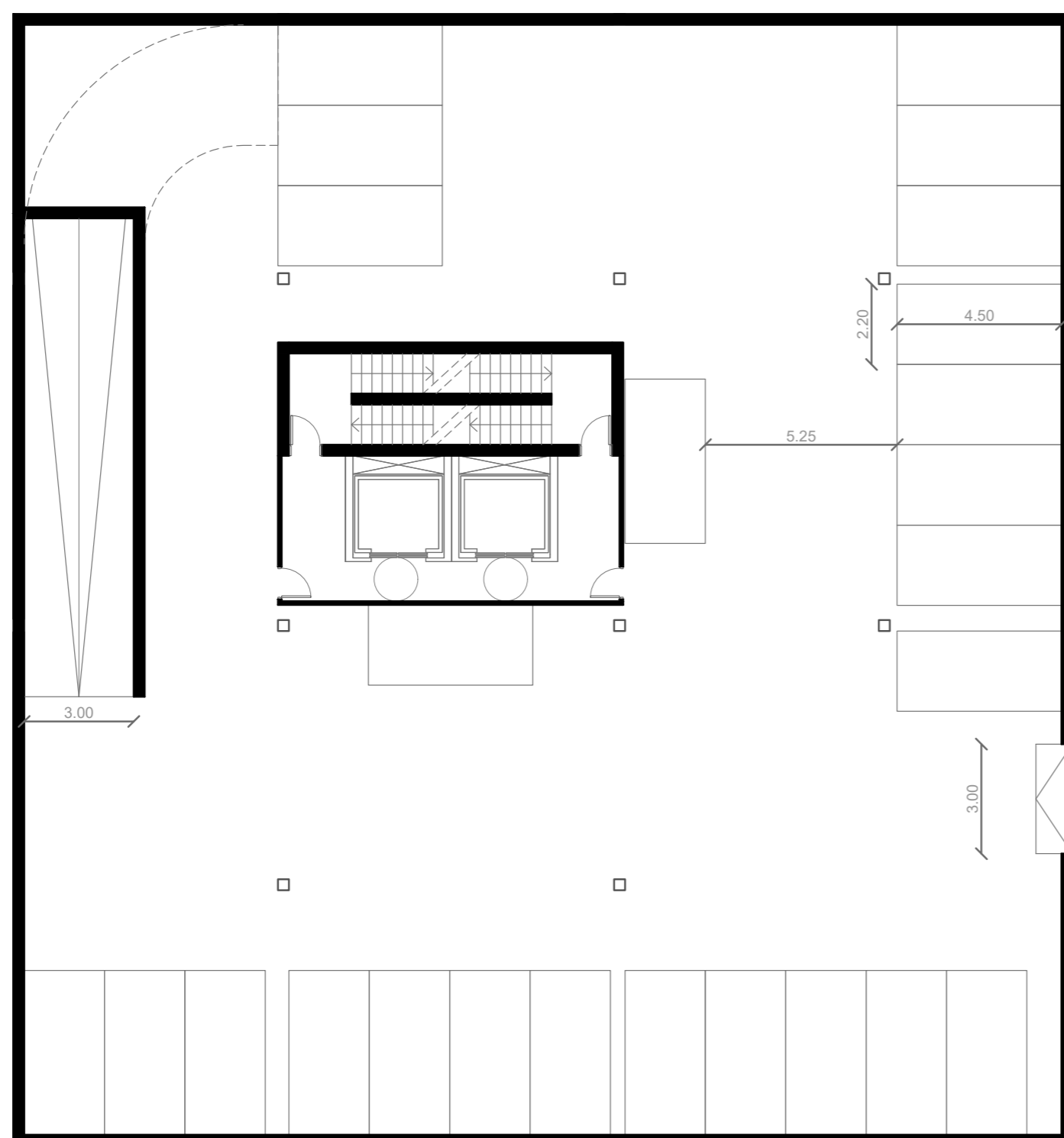
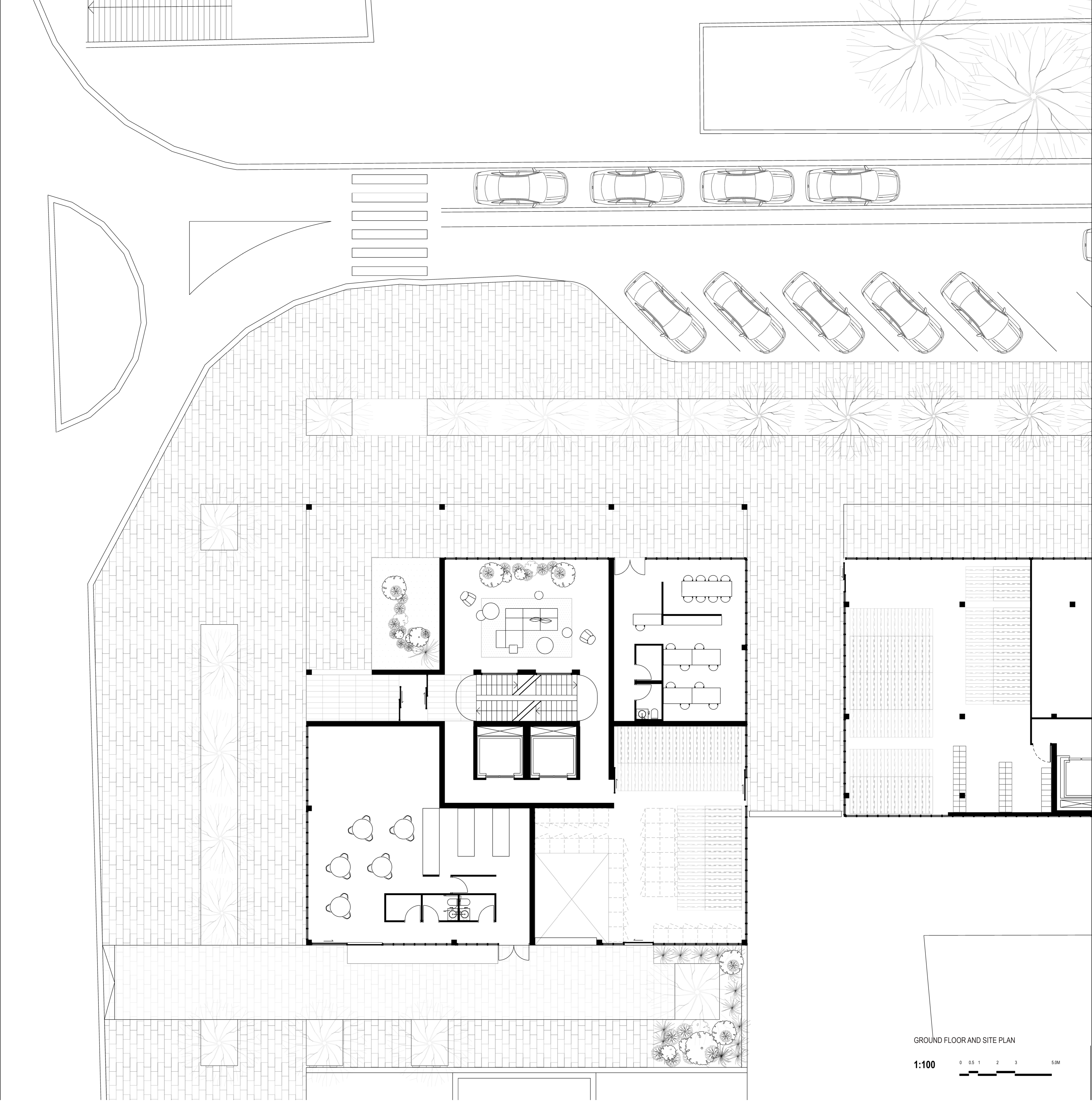
TYPICAL FACADE



TYPICAL FACADE

1:50



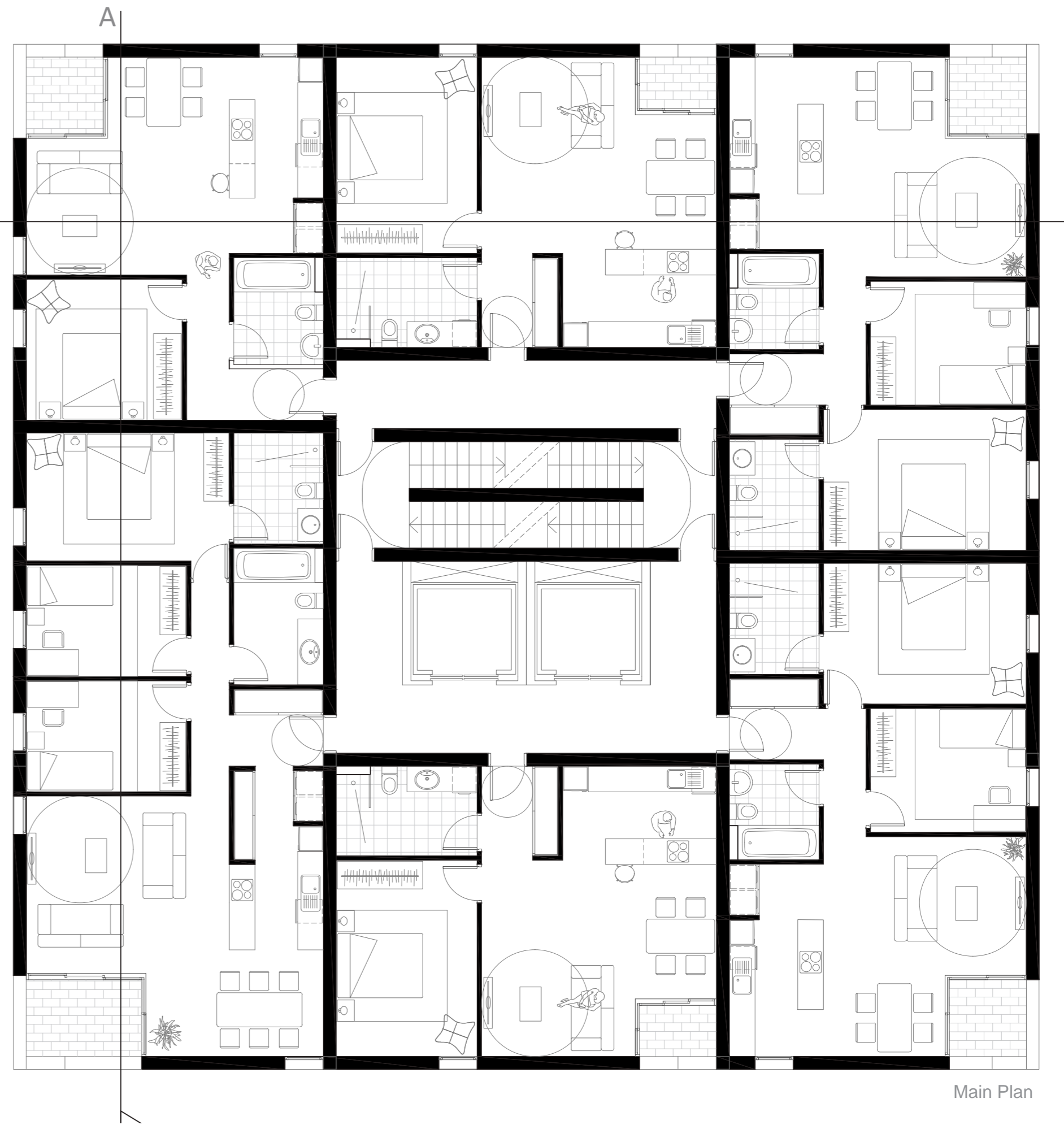


BASEMENT CARPARK

1:100 0 0.5 1 2 3 5.0M



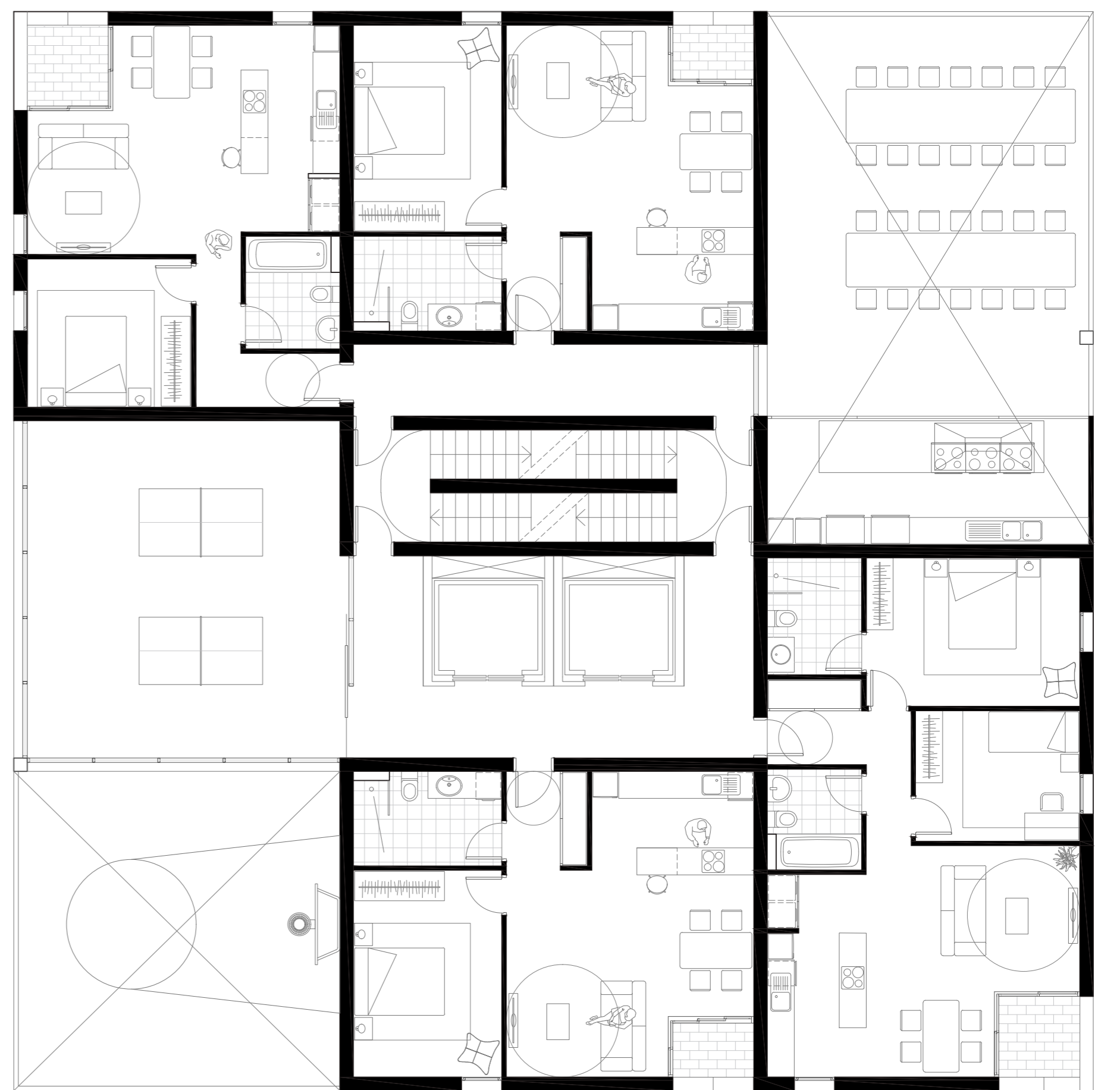
1st Plan



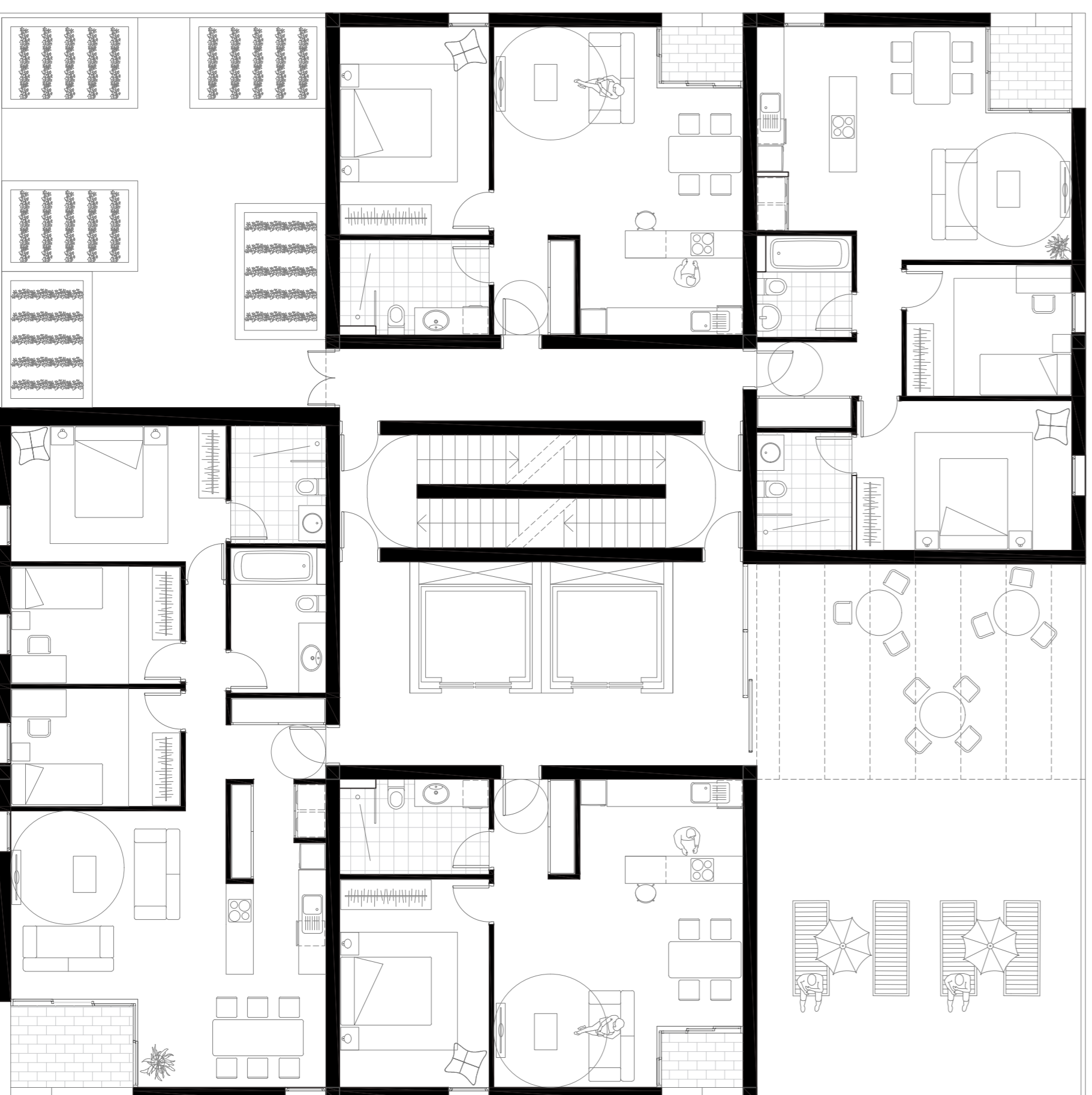
Main Plan



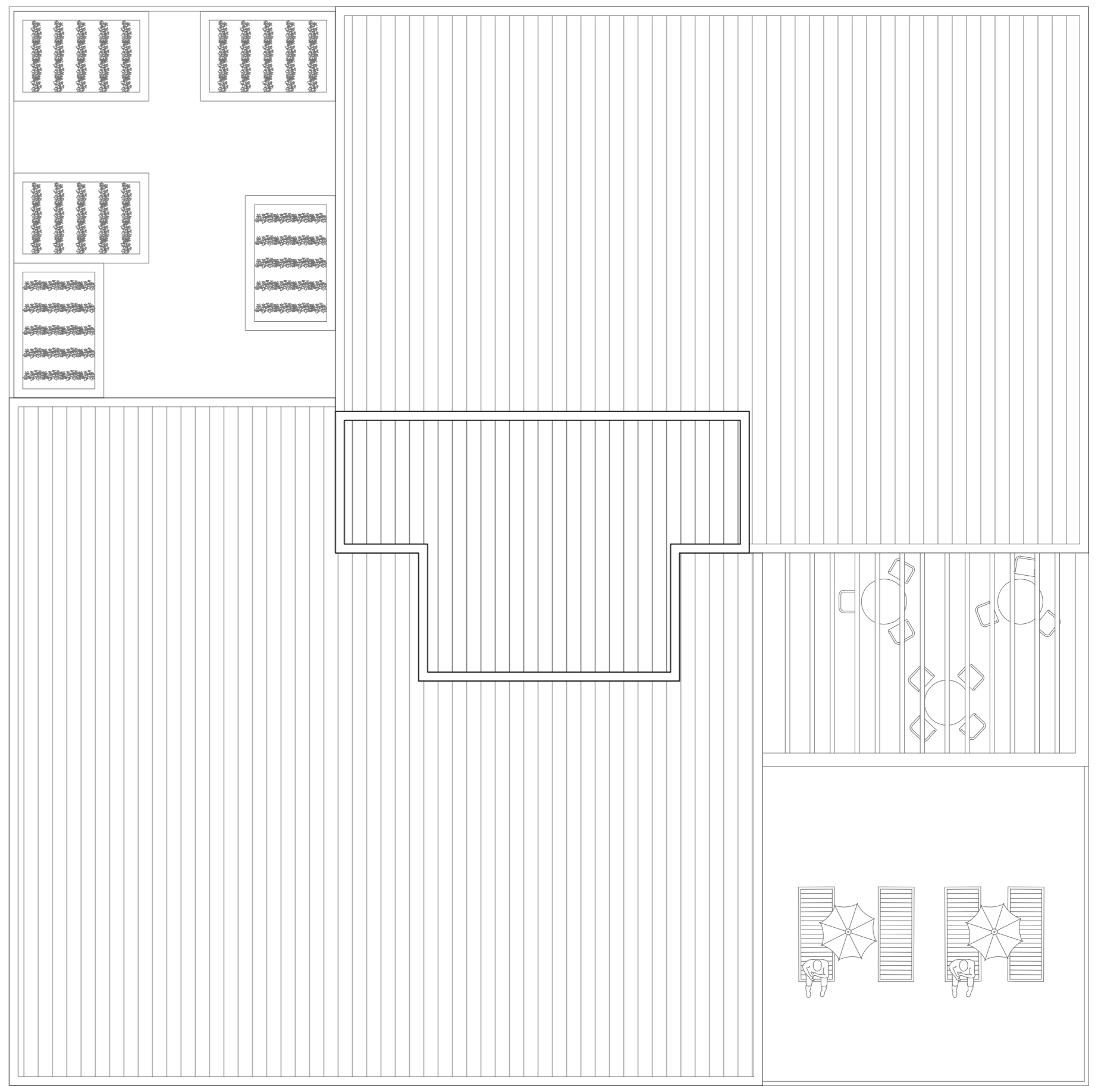
7th Plan



8th Plan



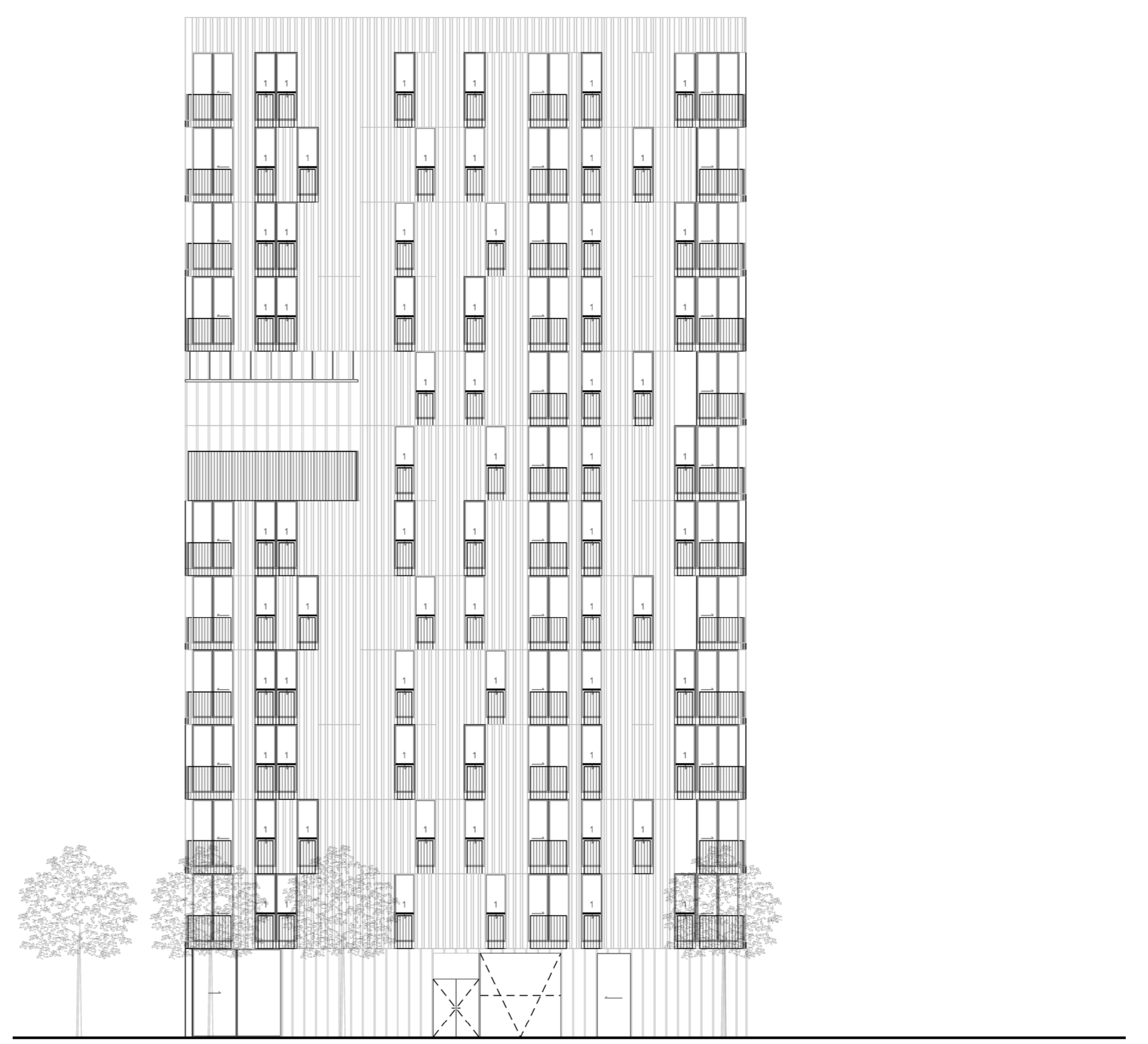
12th Plan



Roof Plan



EAST ELEVATION



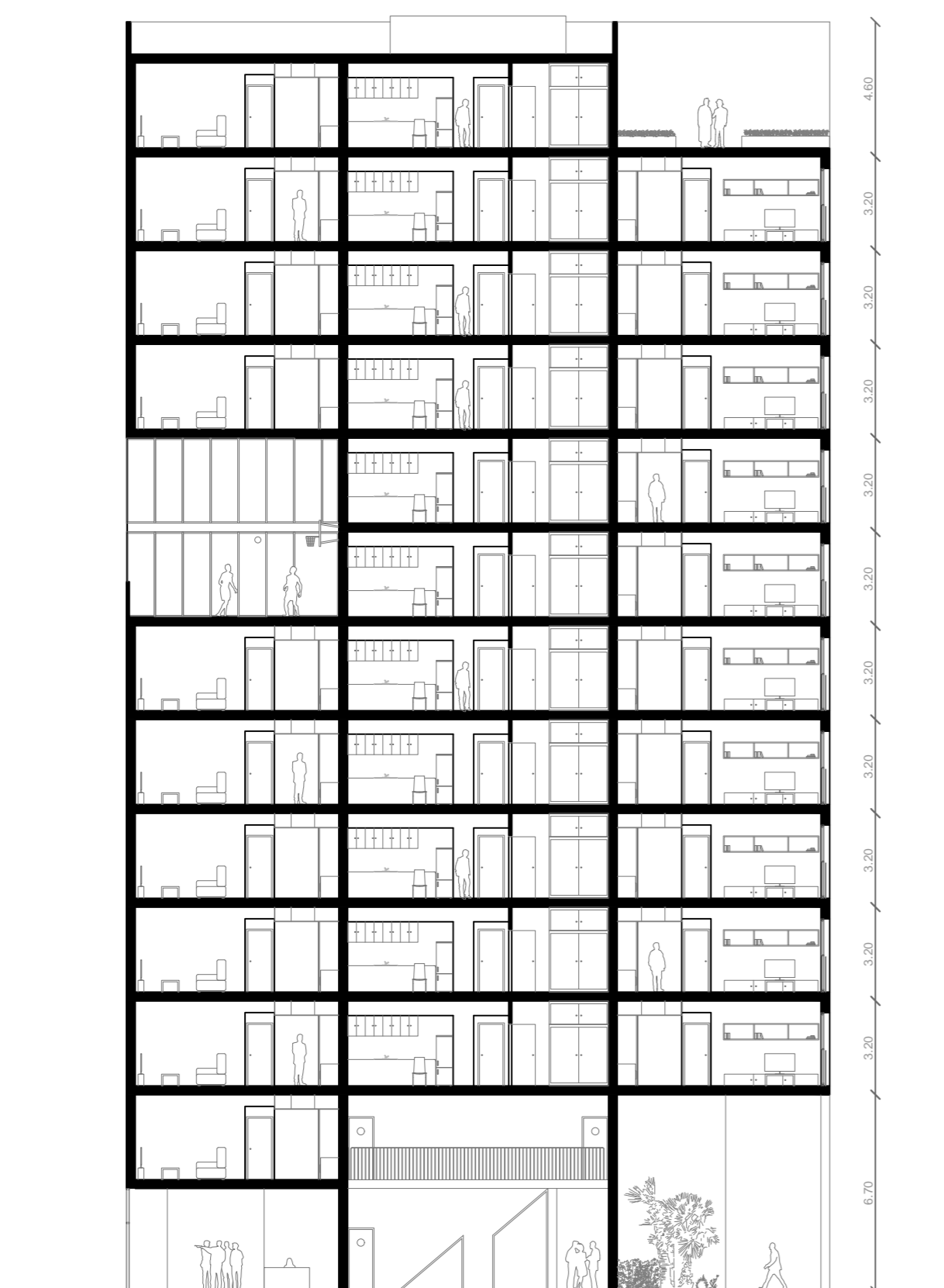
SOUTH ELEVATION



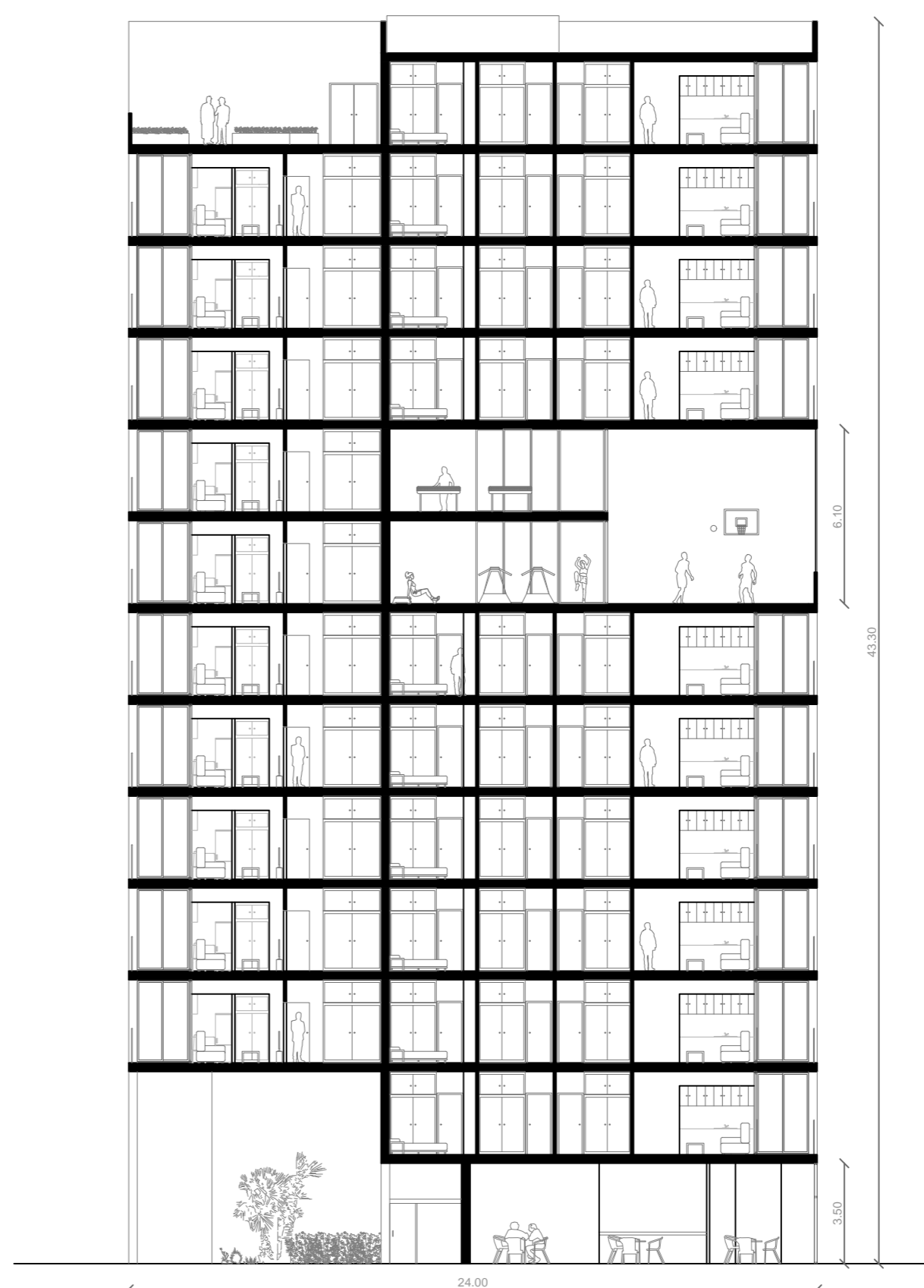
WEST ELEVATION



NORTH ELEVATION



SECTION BB



SECTION AA



NORTH ELEV

1:500 0 2 5 10 15 25M

